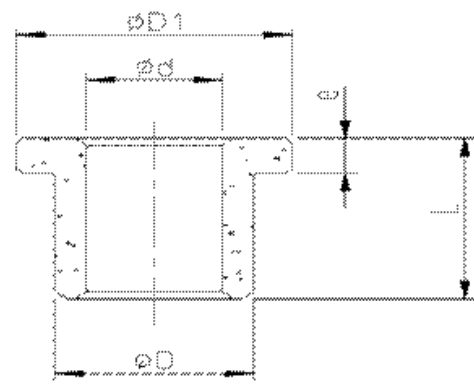


AM, AI, AW



AL, AJ (with flange)

Material Chemical Component	Cu 54-56% Sn 4-6% Fe 39-41%							
Physical and Mechanical Performance	Oil content (%)	≥18%	Oil density (g/cm ³)	6.2-6.8	Crushing strength (N/mm ²)	>150	Surface hardness (HB)	25-55
HMEC Type no.	Dimension							
	d		D		L		D1	e
AM 061006	6	+0.016 +0.000	10	+0.038 +0.013	6	±0.1		
AM 081108	8	+0.025 +0.000	11	+0.056 +0.028	8	±0.11		
AM 081212	8	+0.025 +0.000	12	+0.056 +0.028	12	±0.135		
AM 081216	8	+0.025 +0.000	12	+0.056 +0.028	16	±0.135		
AM 081220	8	+0.025 +0.000	12	+0.056 +0.028	20	±0.165		
AM 081206	8	+0.025 +0.000	12	+0.056 +0.028	6	±0.1		
AM 081208	8	+0.025 +0.000	12	+0.056 +0.028	8	±0.11		
AM 101416	10	+0.025 +0.000	14	+0.056 +0.028	16	±0.135		
AM 101408	10	+0.025 +0.000	14	+0.056 +0.028	8	±0.11		
AM 101610	10	+0.025 +0.000	16	+0.056 +0.028	10	±0.11		
AM 101616	10	+0.025 +0.000	16	+0.056 +0.028	16	±0.135		
AM 101620	10	+0.025 +0.000	16	+0.056 +0.028	20	±0.165		
AM 101625	10	+0.025 +0.000	16	+0.056 +0.028	25	±0.165		
AM 121612	12	+0.034 +0.006	16	+0.056 +0.028	12	±0.135		
AM 121616	12	+0.034 +0.006	16	+0.056 +0.028	16	±0.135		
AM 121620	12	+0.034 +0.006	16	+0.056 +0.028	20	±0.165		
AM 121625	12	+0.034 +0.006	16	+0.056 +0.028	25	±0.165		
AM 121812	12	+0.034 +0.006	18	+0.056 +0.028	12	±0.135		
AM 121816	12	+0.034 +0.006	18	+0.056 +0.028	16	±0.135		
AM 121820	12	+0.034 +0.006	18	+0.056 +0.028	20	±0.165		
AM 121825	12	+0.034 +0.006	18	+0.056 +0.028	25	±0.165		